



# COVID-19 Pandemic 2020

Municipality of North Grenville

Impact & Response

May 19, 2020

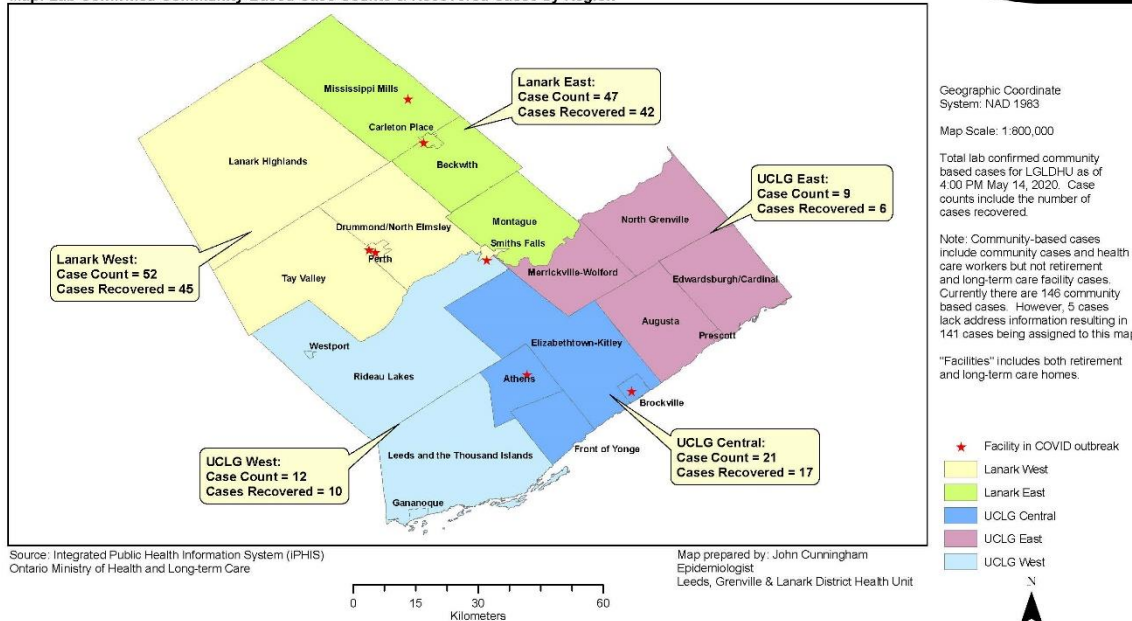
# COVID-19 Data as of May 14, 2020

## 327 Laboratory Confirmed Cases\*\*

### COVID-19 Case Summary by Geographic Region - LGLDHU



Map: Lab Confirmed Community-Based Case Counts & Recovered Cases by Region



- 3% < 19yrs; 14% 20-44; 21% 45-64; 62% > 65yrs
  - Median Age = 74yrs
- 209(64%) of cases recovered
- 48 (15%) deaths
  - 96% > 65yrs
  - 25% occurred in hospital
  - 65% female
- 181 (56%) LTC/RR
- 70 (21%) community cases
- 76 (23%) health care workers
- 6 current Outbreaks in LTC/RR ★

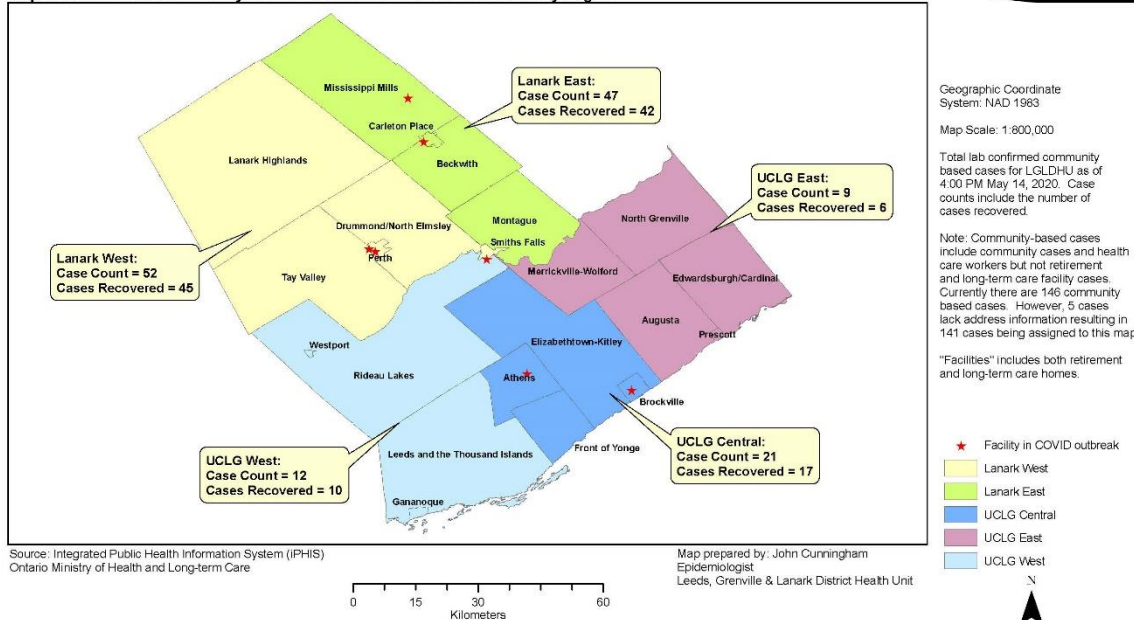
\*\* The Leeds, Grenville and Lanark District Health Unit has had the highest per capita number of people with lab confirmed COVID-19 compared to other Health Unit regions in Ontario.

# COVID-19 Data as of May 14, 2020

## COVID-19 Case Summary by Geographic Region - LGLDHU



Map: Lab Confirmed Community-Based Case Counts & Recovered Cases by Region



MNG data is included as part of  
“UCLG East”

9 confirmed cases

6 cases recovered

No LTC/RR in MNG subject to  
outbreak



# MNG Response



shutterstock.com • 1666725613



Our green spaces and trails remain open. However, please maintain social distance of 2m (6').



The Municipality's priority is protecting the health and safety of our residents and continuing to serve you.

Stay up to date and visit:  
[www.northgrenville.ca/coronavirus](http://www.northgrenville.ca/coronavirus)



Our green spaces and trails remain open. However, please maintain social distance of 2m (6').



The Municipality's priority is protecting the health and safety of our residents and continuing to serve you.

Stay up to date and visit:  
[www.northgrenville.ca/coronavirus](http://www.northgrenville.ca/coronavirus)



Our green spaces and trails remain open. However, please maintain social distance of 2m (6').



The Municipality's priority is protecting the health and safety of our residents and continuing to serve you.

Stay up to date and visit:  
[www.northgrenville.ca/coronavirus](http://www.northgrenville.ca/coronavirus)



- ECG convened; municipal-lead rec activities canceled (March 13<sup>th</sup>)
- MNG COVID-19 Communication Strategy implemented
- All municipal facilities (arenas, libraries, Munic. Centre, E&PS Bldg) closed to the public (March 17<sup>th</sup>)
- Declaration of Local State of Health Emergency (March 25<sup>th</sup>)
- All outdoor recreation facilities - except trails - closed (March 26<sup>th</sup>)
- Total 'Burn Ban' for MNG & UCLG (March 26<sup>th</sup>)

# Community Support



- Financial relief Package released (March 24<sup>th</sup>)
  - Deferred payments on:
    - property taxes;
    - water bills;
    - dog licenses
  - **\$1.38M** Cost Containment Plan/COVID-19 Reserve Fund approved (April 1<sup>st</sup>)
    - **\$500k** allocated to:
      - Revenue loss/future tax rate increase mitigation
      - Business support programs
      - Unbudgeted COVID-19 related expenses

# Paradigm Shift for Municipal Operations



- 22 (29%) employees working remotely
- Committees of Council suspended
- All business meetings held virtually
- Special Provincial dispensation granted to hold electronic (virtual) Council meetings during Provincial State of Emergency
- Technology improvements to allow mandatory Public Meetings under Planning Act to be conducted virtually



# Modifications to Operations



- Waste Transfer Station
  - No hazardous waste drop-off
  - Use of debit cards only for payment
  - ID requirement
  - Limitation of number of public vehicles on-site – enforcement of social distancing
- **15%** (63 tonnes) *increase* in solid waste collect March – April 2020 over 2019
- POS (on-line) Bag Tag sales
- Required social distancing on municipal properties including trail system
- Closure of outdoor pool facility due to social distancing restrictions due to provincial order
- Municipal By-law Enforcement support for enforcement of Provincial COVID-19 Order restrictions
- Re-assignment of work – hiring freeze for part-time and seasonal work staff

# Finance – Cost Containment



## Operating Cost Containment Plan

- Control costs through the management of discretionary spending items
- Recover costs where possible through grants and other forms of financial assistance
- Minimize any potential deficit in the Municipality's operating fund at end of year
- Mitigate impact on reserves

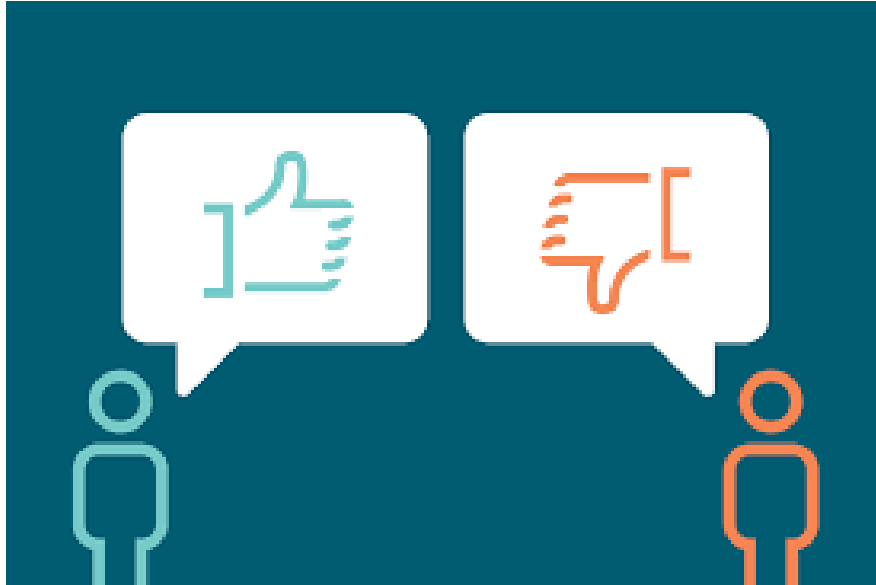
- **\$400k** in savings realised

## Capital Investment Containment

- Suspension/cancellation of certain capital works
- **\$960k** in savings realized



# Finance - Revenues



- **\$890k** (5%) decrease in property tax revenue collected in March installment from 2019
- **\$271k** projected PRC net revenue loss by December 31, 2020 assuming a full start up in September
- **\$220k** projected loss in penalty & interest revenue from non-payment of property taxes
- Other projected revenue losses in such areas as licencing fees, investment income
- **\$40k** *increase* in 'Bag Tag' revenue to date from 2019; 'tipping fees' increase (still being calculated)
- COVID-19 Fund has **\$800K** remaining
- Projected 2019 year-end surplus of **\$500k**

# Finance – COVID Response Related Unbudgeted Expenses



- **\$75k** in projected COVID response related unbudgeted expenses related to:
  - Technology improvement requirements
  - Communications
  - Signage
  - Workplace modifications
  - PPE & other safety supplies

# Finance – Unbudgeted Community Support Expenses



## Business Support Program (to date)

- **\$150k** for enhanced Love NG marketing and promotion plan for local businesses
- **\$100k** (request) for Small Business Assistance Fund
- **\$35k** for increased security for closed MNG businesses
- **\$5k** for Invest NG website redesign

# Moving Forward



## Stage 1

---

Initially, consider:



For businesses that were ordered to close or restrict operations, opening select workplaces that can immediately meet or modify operations to meet public health guidance and occupational health and safety requirements (e.g., curbside pick-up or delivery).

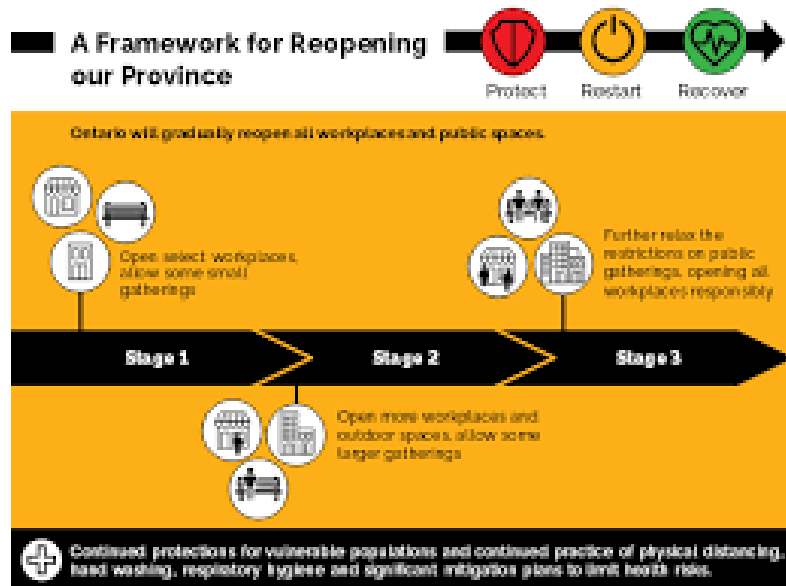


Opening some outdoor spaces like parks and allow for a greater number of individuals to attend some events, such as funerals.



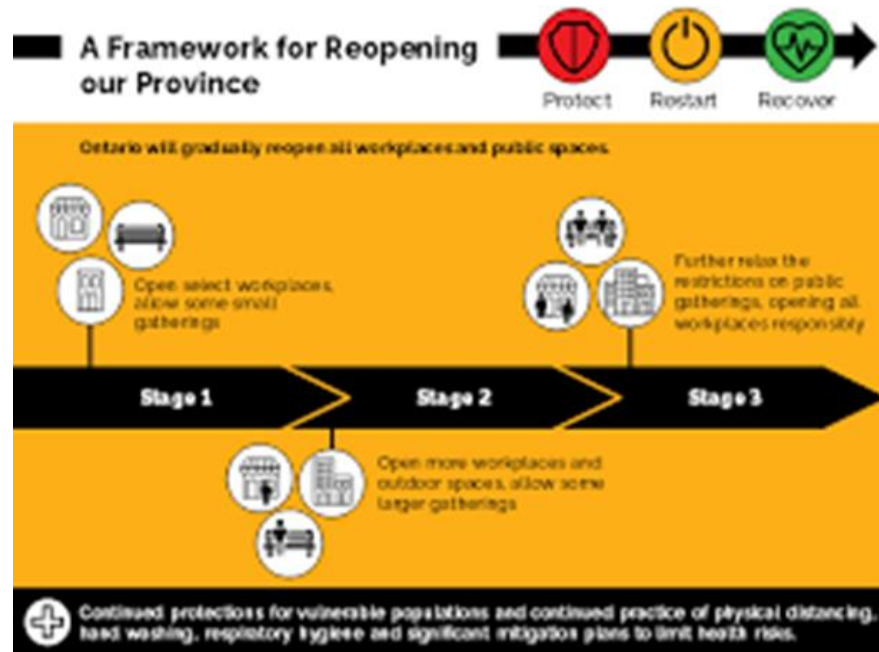
Continued protections for vulnerable populations and the continued practice of physical distancing, hand washing and respiratory hygiene, and significant mitigation plans to limit health risks. Hospitals beginning to offer some non-urgent and scheduled surgeries and other health care services.

# Municipal Impact of Reopening Plan



- Commencement of previously suspended municipal projects
- Potential increased demand on enforcement services
- Initiation of business and resident education/information communications program

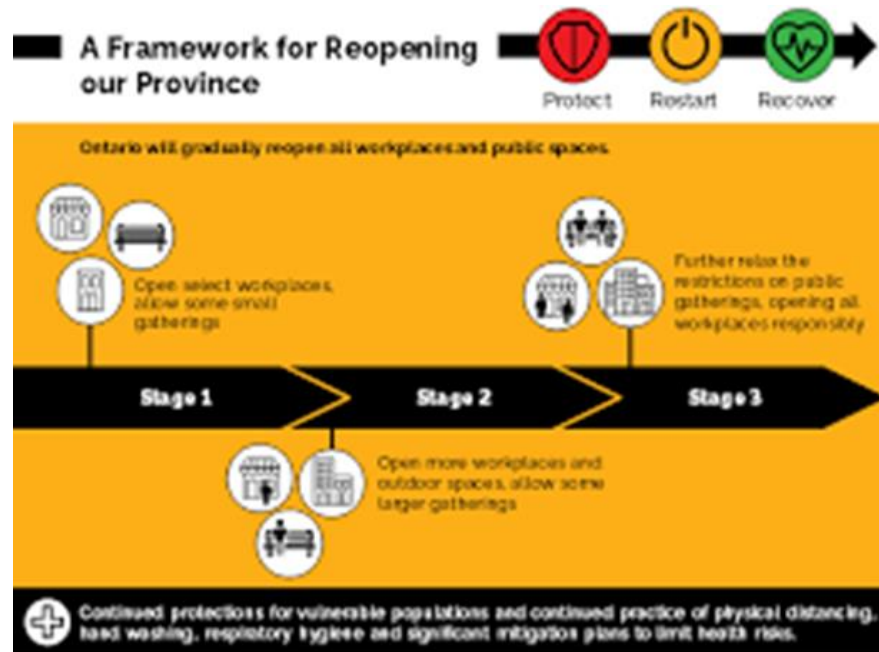
# Municipal Impact of Reopening Plan



- Permits can now be issued for all construction activities
- **May 25<sup>th</sup>** – Municipal Centre open by appointment only for building related matters (under defined restrictions)
- **May 25<sup>th</sup>** – beginning of the ending of remote working arrangements for municipal staff



# Municipal Impact of Reopening Plan



- NG Library can provide curbside services
- the reopening of some outdoor recreational amenities, including outdoor sports facilities and multi-use fields, off-leash dog areas, and outdoor picnic sites, benches and shelters in park and recreational areas.
- outdoor playgrounds, play structures and equipment, fitness equipment, public swimming pools, splash pads and similar outdoor water facilities will remain closed

# Long-term Changes

- Acknowledgement of benefit of flexible work arrangements for identified positions
  - Remote work scheduling/'hot desks'
- Catalyst for operational technological improvements
- Value of virtual contact/engagement
- Service delivery improvements
  - POS system
  - Strengthening of Admin. support

# Questions and/or Comments?

