

SCHEDULE			
AREA (Sq.M.)	PART	LOT	CONCESSION
15747.3	1	PART OF	3
6551.8	2	24	

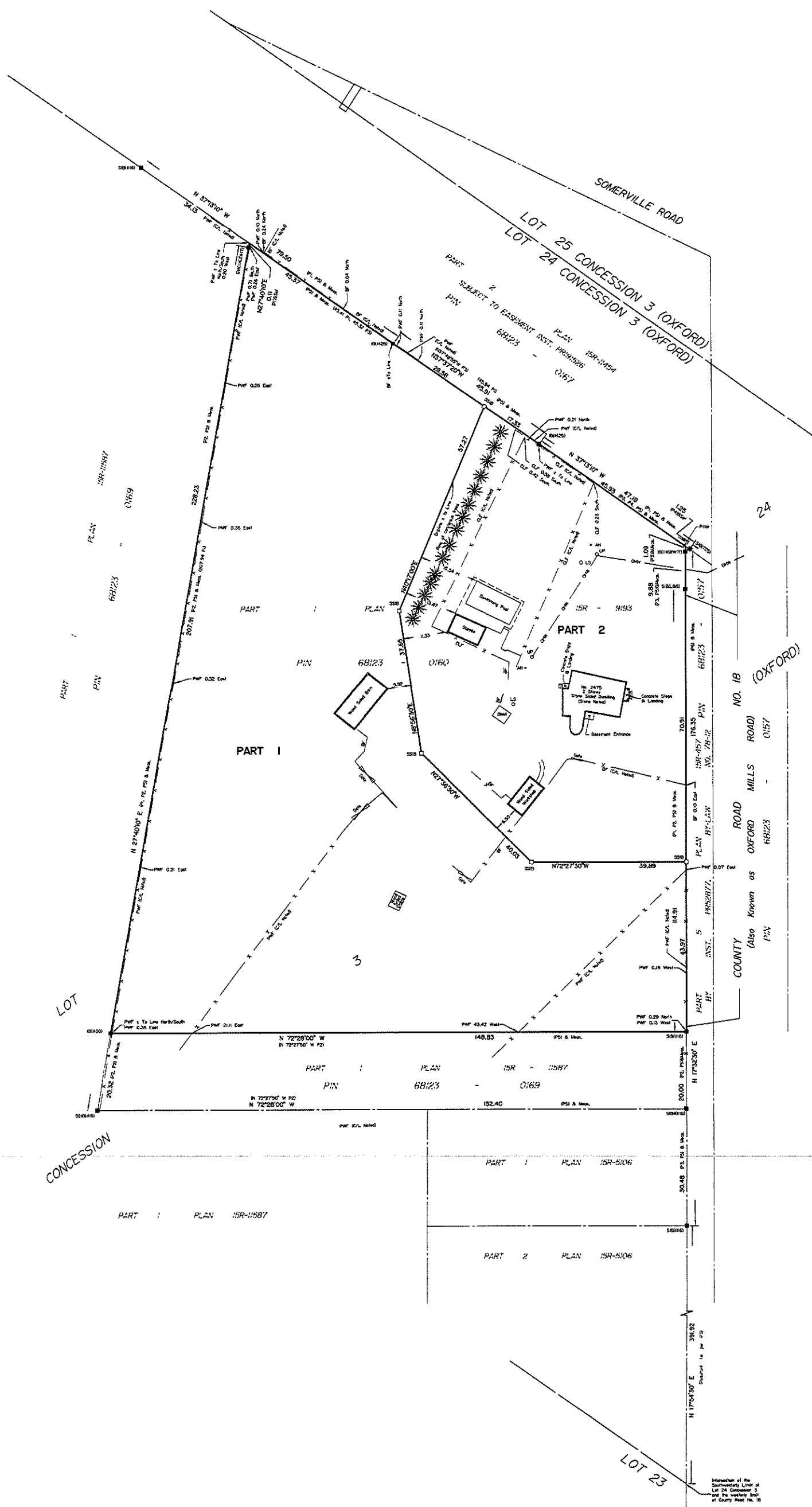
I REQUIRE THIS PLAN TO BE DEPOSITED UNDER THE LAND TITLES ACT.
DATE: _____

PLAN 15R-
RECEIVED AND DEPOSITED
DATE: _____

DRAFT PLAN OF SURVEY OF
**PART OF LOT 24
CONCESSION 3
GEOGRAPHIC TOWNSHIP OF OXFORD
MUNICIPALITY OF NORTH
GRENVILLE
COUNTY OF GRENVILLE**
Surveyed by Annis, O'Sullivan, Vollebek Ltd.

Scale 1:500
0 5 10 15 20 Metres

Metric
DISTANCES AND COORDINATES SHOWN ON THIS PLAN ARE IN METRES AND CAN BE CONVERTED TO FEET BY DIVIDING BY 0.3048.



Surveyor's Certificate
I CERTIFY THAT:
1. This survey and plan are correct and in accordance with the Surveyors Act, the Surveyors Regulation and the Land Titles Act and the regulations made under them.
2. The survey was completed on the 25th day of July, 2024.

Date: _____
T. Hartwick
Ontario Land Surveyor

This plan of survey relates to AOLS Plan Submission Form Number V-_____

- Notes & Legend**
- Denotes Survey Monument Planted
 - Survey Monument Found
 - SSIB Round Standard Iron Bar
 - IB Short Standard Iron Bar
 - IB Iron Bar
 - SIB Round Standard Iron Bar
 - (WT) Witness
 - Mens. Measured
 - (ADG) Annis, O'Sullivan, Vollebek Ltd.
 - Calc. Calculated
 - (P1) Plan 15R-11587
 - (P2) Plan 15R-11589
 - (P3) Plan 15R-3193
 - (P4) Plan 15R-8200
 - (P5) (AOG) Plan, July 7, 2023
 - Overhead Wires
 - CLF Chain Link Fence
 - BF Board Fence
 - PWF Post and Wire
 - Gate
 - UP Utility Pole
 - AN Anchor
 - LS Light Standard
 - C/L Centreline
 - ★ Coniferous Tree

Bearings are grid, derived from Can-Nat 2016 Real Time Network GPS observations, MTM Zone 9 (78°30' West Longitude) NAD-83 (CSRS) 2010.

For comparison purposes, a rotation of 0°35'10" counter clockwise was applied to bearings on plan P2 and P3.

ANNIS, O'SULLIVAN, VOLLEBEK LTD.
14 Concession 3, Suite 500
Napanee, Ont. K2E 7S5
Phone: (613) 727-0850 / Fax: (613) 727-1079
www.annis-sullivan.com